

**RACK ASSEMBLY INSTRUCTIONS**

- READ ALL INSTRUCTIONS FULLY BEFORE ATTEMPTING TO INSTALL OR SET UP RACK.

- ① CHECK RECEIVED PARTS AGAINST PARTS LIST BELOW.
- ② RACK LOCATION SHOULD:
  - A. AWAY FROM OUTSIDE SOURCES OF HEAT (DIRECT SUN-LIGHT, RADIATORS, STEAM PIPES ETC.)
  - B. ON LEVEL GROUND.
  - C. EASILY ACCESSIBLE FOR CELL READINGS AND WATER ADDITIONS, IF APPLICABLE.
- ③ MARK LOCATION ON FLOOR AND POSITION FRAMES.
- ④ INSTALL BRACES ON TO FRAMES AND HAND TIGHTEN NUTS.
- ⑤ INSTALL RAILS IN APPROPRIATE POSITION FOR BATTERY SYSTEM TO BE USED AND HAND TIGHTEN NUTS.
- ⑥ CHECK THAT RAILS AND BRACES ARE IN CORRECT POSITION AND SQUARE RAIL WITH FRAME.
- ⑦ INSTALL RAIL INSULATION ON BOTH INSIDE SURFACES OF THE RAIL.
- ⑧ TIGHTEN ALL NUTS TO A 30 FT/LB TORQUE VALUE STARTING WITH BRACES FIRST, THEN RAILS.
- ⑨ BOLT FRAMES TO FLOOR OR WALL (WHICHEVER IS MORE APPROPRIATE.)
- ⑩ USE MOUNTING HOLES #3 & 4 FOR PL-7, PL-8, PL-10, PL-11, PL-15 & PL-27 BATTERIES WHEN INSTALLING CELLS LENGTHWISE. OTHER MOUNTING HOLES MAY BE USED FOR OTHER ARRANGEMENTS WHEN SMALLER LENGTHS OF RACKS ARE REQUIRED.
- ⑪ ALL MOUNTING SLOTS ARE 5/8" X 1" AND SUPPLIED WITH 3/8" HARDWARE KIT. (SEE NOTE)
- ⑫ ALL RACKS ARE MADE OF STEEL ANGLE SUPPORTS AND ARE COATED WITH ACID-RESISTING BAKED ENAMEL.

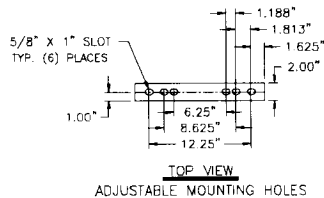
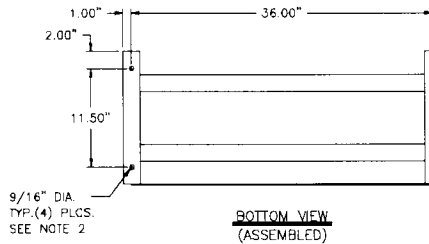
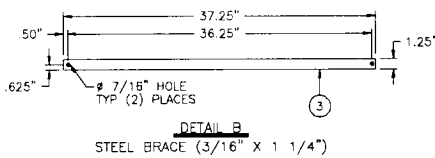
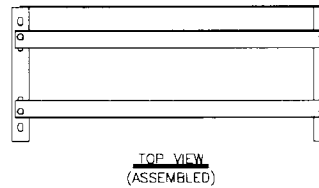
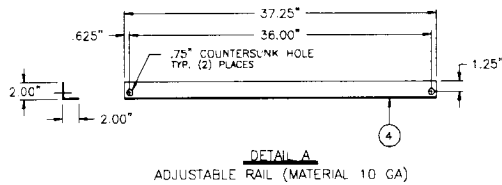
NOTE:

- 1.) 3/8" HARDWARE KIT INCLUDES (4) FLAT HEAD SCREWS (14) FLAT WASHERS, (13) STAR LOCK WASHERS, & (13) HEX NUTS, (4) 3/8" X 7/8" HEX HEAD SCREW (1) 3/8" X 1 1/4" HEX HEAD SCREW
- 2.) IN ORDER TO MEET THE SEISMIC CERTIFICATION, ALL RATED RACKS OR CABINETS MUST BE ANCHORED TO THE FLOOR USING MINIMUM SIZE BOLT OF 1/2"-13 IN ANY GRADE STEEL. CUSTOMER SUPPLIED FLOOR EMBEDMENTS MUST ALSO BE DESIGNED TO ACCOMMODATE MAXIMUM SEISMIC LOADS.

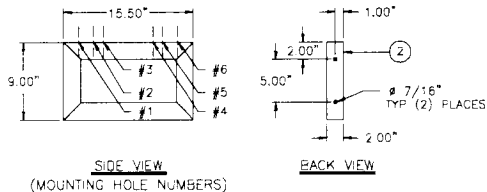
- (5) TC OR PRC-1225X USE MOUNTING HOLES #3 & #4.
- (7) TC OR PRC-1230X, 1235X USE MOUNTING HOLES #3 & #5.
- (6) TC OR PRC-1245X, 1250XL USE MOUNTING HOLES #3 & #5.
- (5) TC OR PRC-1265, 1280X, 1290X USE MOUNTING HOLES #1 & #4.
- (5) TC OR PRC-12100X USE MOUNTING HOLES #1 & #5.
- (5) TC OR PRC-12110X, 12120X, 12150X USE MOUNTING HOLES #1 & #6.
- (5) TC OR PRC-6165X, 6200X, 6225X USE MOUNTING HOLES #1 & #4.
- (5) TC-2450X, 2550X, 2600X USE MOUNTING HOLES #1 & #4.

5	BATTERY RAIL INSULATION	4	RI-37.250
4	ADJUSTABLE RAILS	2	RL-37.250
3	BRACES	2	B-37.375
2	FRAMES	2	F-9.000
1	RACK HARDWARE KIT	*	RHK-1
NG.:	DESCRIPTION:	QTY.:	PART NO.:

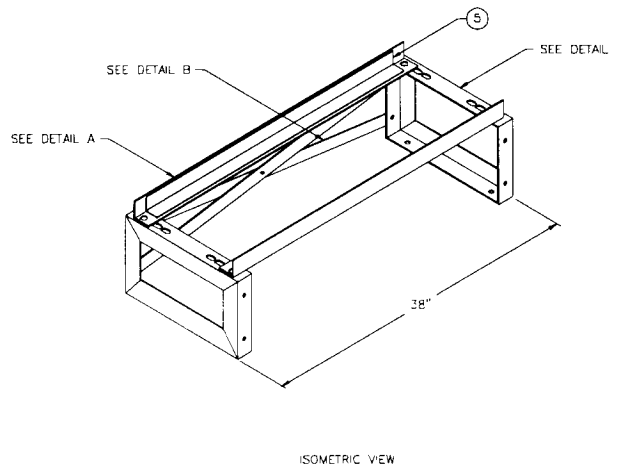
<b>POWER</b> POWER BATTERY COMPANY INC.		ZONE FOUR BATTERY RACK ONE STEP, ONE TIER	
TOLERANCES EXCEPT AS NOTED:		REVISIONS:	
DECIMAL:	1	DATE:	1/2/83
FRACTIONAL:	2	DATE:	4/28/80
ANGULAR:	3	DATE:	8/17/84
	4	DATE:	8/18/80
	5	DATE:	
DESIGN BY:	LUIS	CHECK BY:	Blair P.
SCALE:	NONE	APPROVED:	
FILE NO.:	RB38-D	REV. NO.:	RB38



ADJUSTABLE MOUNTING HOLES



FRAME ASSEMBLY (MATERIAL 10 GA)



ISOMETRIC VIEW