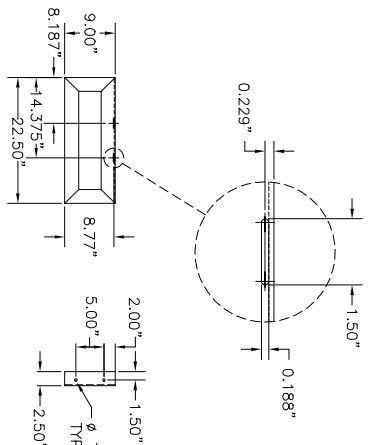
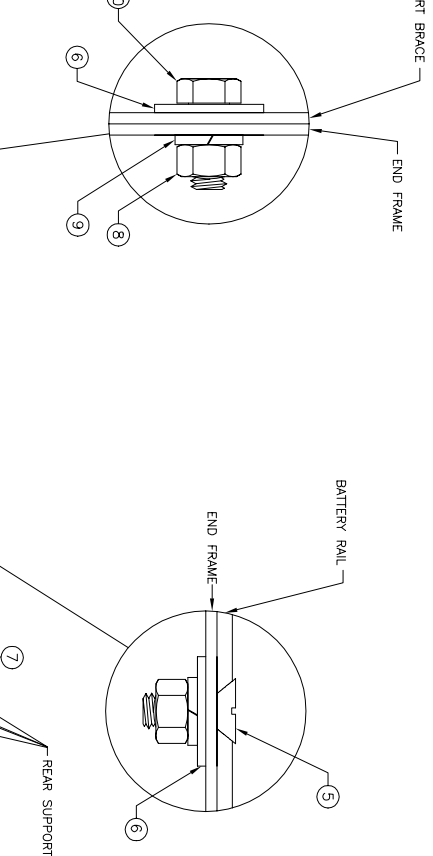
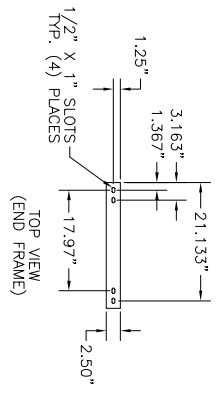
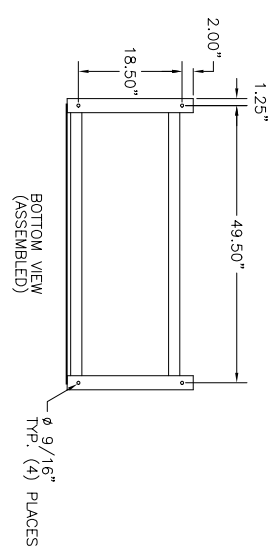
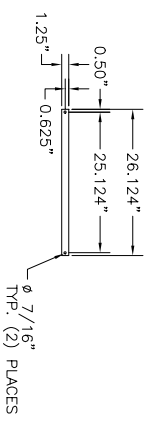
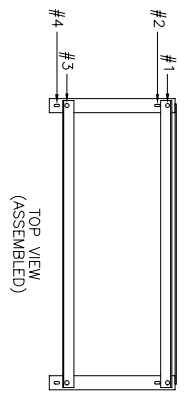
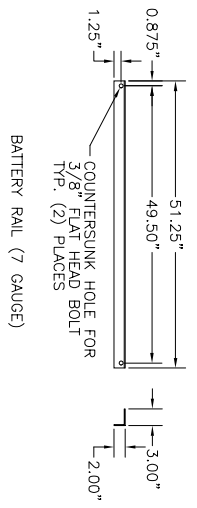


MAXIMUM NUMBER OF SLIM LINE BATTERIES PER RACK

MODEL #	CSL-12170	SL/SIF-12205	CSL-1280	SL/SIF-12105
RB52	5	5	10	10

RACK ASSEMBLY INSTRUCTIONS

- READ ALL INSTRUCTIONS FULLY BEFORE ATTEMPTING TO INSTALL OR SET UP RACKS.
- (A) CHECK RECEIVED PARTS AGAINST PARTS LIST BELOW.
- (B) RACK LOCATION SHOULD:
  1. AWAY FROM OUTSIDE SOURCES OF HEAT (DIRECT SUN- LIGHT, RADIATORS, STEAM PIPES ETC.)
  2. ON LEVEL GROUND.
  3. EASILY ACCESSIBLE FOR CELL READINGS.
- (C) MARK LOCATION ON FLOOR AND POSITION FRAMES.
- (D) INSTALL BRACES ON TO FRAMES AND HAND TIGHTEN NUTS.
- (E) INSTALL RAILS IN APPROPRIATE POSITION FOR BATTERY SYSTEM TO BE USED AND HAND TIGHTEN NUTS.
- (F) CHECK THAT RAILS AND BRACES ARE IN CORRECT POSITION AND SQUARE RAIL WITH FRAME.
- (G) INSTALL RAIL INSULATION ON BOTH INSIDE SURFACES OF THE RAIL MAKING SURE THEY MEET AT THE BEND IN THE RAIL.
- (H) TIGHTEN ALL NUTS TO A 30 FT/LB TORQUE VALUE STARTING WITH BRACES FIRST, THEN RAILS.
- (I) \*BOLT FRAMES TO FLOOR. FOR UBC 97 ZONE FOUR CERTIFIED RACKS, A MINIMUM OF 6" OF SPACING IS NEEDED AROUND ALL SIDES OF RACK.
- (J) ALL MOUNTING SLOTS ARE 1/2" X 1" AND SUPPLIED WITH 3/8" HARDWARE KIT.
- (K) ALL RACKS ARE MADE OF STEEL ANGLE SUPPORTS AND ARE PAINTED WITH A TEXTURED IBM WHITE ELECTROSTATIC POWDER COAT.



ADDED: SLOTS FOR STRAPPING/HARDWARE KIT & DETAIL/ANCHORING COMPONENTS.  
 MODIFIED RACK ASSEMBLY INSTRUCTIONS PART 1, ADDED NOTE FOR 6" SPACING.  
 ADDED HIDDEN LINES AND REARRANGED DIMENSIONING TO BACK VIEW OF END FRAME.

NOTE: A MINIMUM OF 6" OF SPACE IS NEEDED AROUND EACH SIDE OF RACK IN ORDER TO MEET UBC 97 SEISMIC CRITERIA.

SEISMIC ZONE	*ANCHORING COMPONENTS	SEISMIC SUPPORT BEAMS
1	4-Ø1/2"x6" ROD WITH E12 EPOXY CAPSULES	NOT REQUIRED
2A	4-Ø1/2"x6" ROD WITH E12 EPOXY CAPSULES	NOT REQUIRED
2B	4-Ø1/2"x6" ROD WITH E12 EPOXY CAPSULES	NOT REQUIRED
3	4-Ø1/2"x6" ROD WITH E12 EPOXY CAPSULES	NOT REQUIRED
4	4-Ø1/2"x6" ROD WITH E12 EPOXY CAPSULES	NOT REQUIRED

\*SEE ANCHORING INSTRUCTION DRAWING ANC-9001.

HARDWARE KIT: HK-0005		NO.	DESCRIPTION:	QTY:
10	3/8" X 1 1/4" HEX HEAD SCREW	4		
9	3/8" SPLIT LOCK WASHER	9		
8	3/8" HEX NUT	1		
7	3/8" X 1 1/2" HEX HEAD SCREW	9		
6	3/8" FLAT WASHER	10		
5	3/8" X 1" COUNTERSUNK FLAT HEAD SCREW	4		

NO.	REVISIONS	DATE	BY	SOUL:	NO.	DESCRIPTION:	QTY:	PART NO.:
4	BATTERY RAIL INSULATION KIT	2/6/96		NONE	1			RB52-BRI
3	ADJUSTABLE BATTERY RAIL			NONE	2			RB52-ABR
2	REAR SUPPORT BRACE			NONE	4			RB52-B
1	END FRAME			NONE	2			RB52-RF

POWER BATTERY COMPANY, INC.

**POWER**

RB52 ASSEMBLY DRAWING  
 ONE TIER SEISMIC ZONE 1-4  
 CERTIFIED BATTERY RACK

DRAWING NO.: RB52{C}